

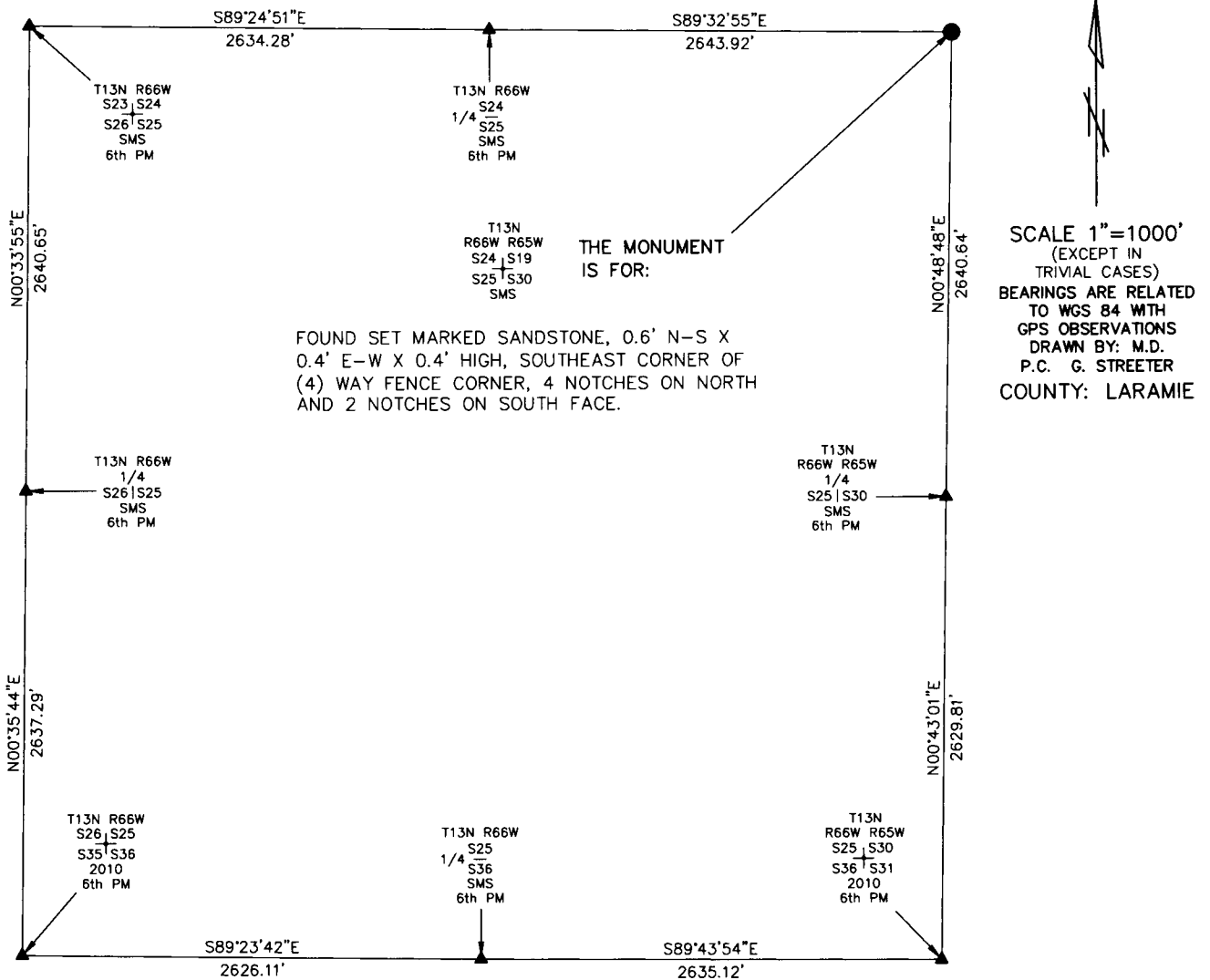
# State of Wyoming Corner Record

## CORNER PERPETUATION AND FILING ACT,

Regulations of the Board of Registration for Professional Engineers and Land Surveyors.)

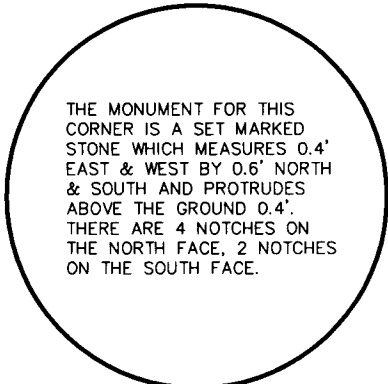
Reverse side of this form may be used if more space is needed.

Record of original survey and citation of source of historic information (if corner is lost or obliterated). Description of corner monumentation evidence found and/or monument and accessories established to perpetuate the location of this corner. Sketch of relative location of monument, accessories, and reference points with course and distance to adjacent corner(s) (if determined in this survey). Method and rationale for reestablishment of lost or obliterated corner.



THE MONUMENT IS FOR:  
FOUND SET MARKED SANDSTONE, 0.6' N-S X 0.4' E-W X 0.4' HIGH, SOUTHEAST CORNER OF (4) WAY FENCE CORNER, 4 NOTCHES ON NORTH AND 2 NOTCHES ON SOUTH FACE.

SCALE 1"=1000'  
(EXCEPT IN TRIVIAL CASES)  
BEARINGS ARE RELATED TO WGS 84 WITH GPS OBSERVATIONS  
DRAWN BY: M.D.  
P.C. G. STREETER  
COUNTY: LARAMIE



THE MONUMENT FOR THIS CORNER IS A SET MARKED STONE WHICH MEASURES 0.4' EAST & WEST BY 0.6' NORTH & SOUTH AND PROTRUDES ABOVE THE GROUND 0.4'. THERE ARE 4 NOTCHES ON THE NORTH FACE, 2 NOTCHES ON THE SOUTH FACE.

### Marking on the Stone

Date of Field Work: 06/02/2010 Office Reference: \_\_\_\_\_

### CROSS INDEX DIAGRAM

A	1	2	3	4	5	6	7	8	9	10	11	12	13	14	15	16	17	18	19	20	21	22	23	24	25	A
B																										B
C		6																								C
D			5																							D
E				4																						E
F					3																					F
G						2																				G
H							1																			H
I																										I
J																										J
K																										K
L																										L
M																										M
N																										N
O																										O
P																										P
Q																										Q
R																										R
S																										S
T																										T
U																										U
V																										V
W																										W
X																										X
Y																										Y
Z																										Z
	1	2	3	4	5	6	7	8	9	10	11	12	13	14	15	16	17	18	19	20	21	22	23	24	25	

Firm/Agency, Address

UELS, LLC

85 South 200 East

Vernal, Utah 84078

Telephone Number: 435-789-1017

This corner record was prepared by me or under my direction and supervision.

SEAL & SIGNATURE



RECORDED 5/06/2011 AT 3:06 PM REC# 568309 K# 2219 PG# 510  
DEBRA K. LATHROP, CLERK OF LARAMIE COUNTY, WY PAGE 1 OF 1